



Altissima, Queenstown Road,
Battersea, SW11

£4,250 Per Month,

NAPIER WATT

T: 0207 935 0011
E: enquiries@napierwatt.co.uk
W: napierwatt.co.uk

35 Berkeley Square, Mayfair, London, W1J 5BF







Description

A superb two-bedroom, two-bathroom lateral apartment with a large balcony, located in this sought-after development between Battersea Park and Battersea Power Station. Set on the seventh floor (with lift) this modern property boasts an open plan living room kitchen and a balcony that runs the length of the apartment. A dedicated 24-hour concierge service is on hand to respond to residents day-to-day needs, as well as on-site amenities including a gymnasium, hydrospace and two stunning landscaped gardens; one a sunken courtyard space, the other a landscaped courtyard at street level. The property is located directly opposite and overlooking Battersea Park and is within 0.4 miles from Queenstown Road and Battersea Park rail stations, running into Waterloo and beyond, as well as being within 0.6 miles to the new Northern Line extension at Battersea Power Station.

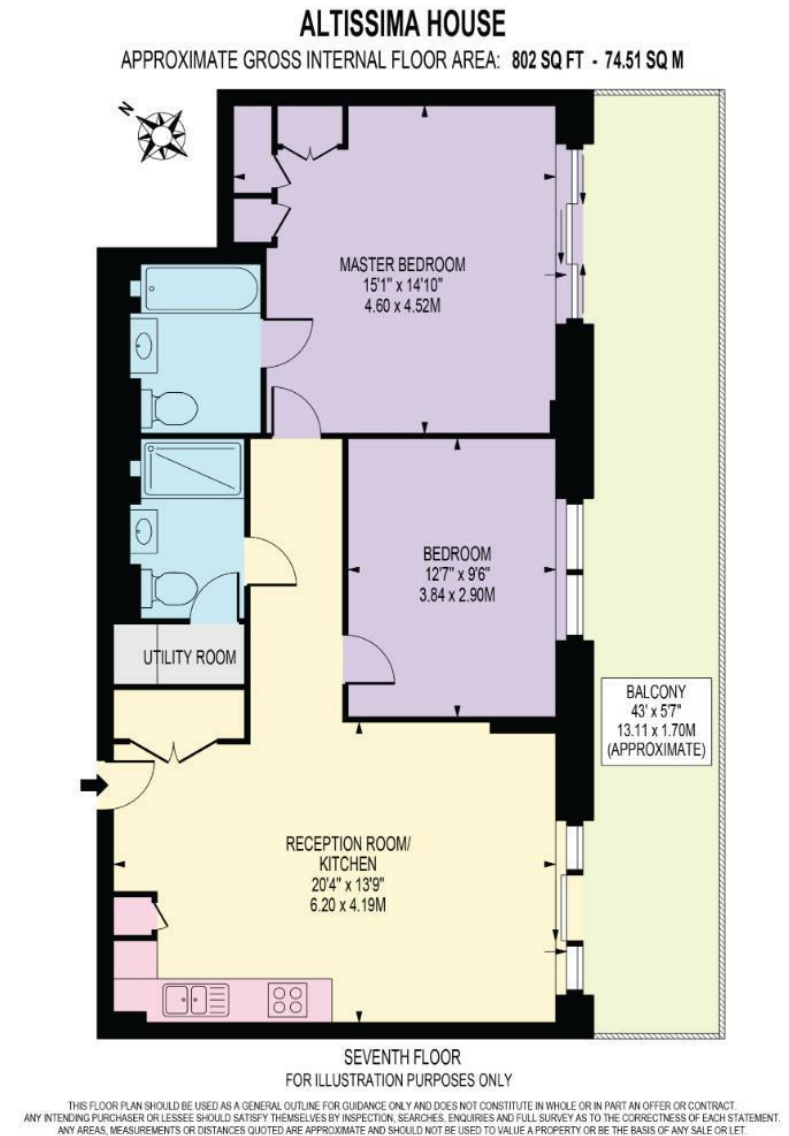
2 Bedrooms : 2 Bathrooms : Balcony : Gym : Lift : Concierge : Wandsworth Council Tax Band F : EPC Rating B

Key Features

- VIEWS OVER BATTERSEA PARK
- 24 HOUR CONCIERGE
- COMMUNAL GARDENS
- TERRACE
- 7TH FLOOR WITH LIFT
- GYM AND HYDROSPA
- CLOSE TO BATTERSEA POWER STATION

Terms

Fees & Charges: Tenancies exceeding £100,000 Per annum £480 inc VAT, Tenancies where a company is a tenant £480 Inc VAT



IMPORTANT: We would inform prospective purchasers that these sales particulars have been prepared as a general guide only. A detailed survey has not been carried out, nor the services, appliances and fittings tested. Room sizes should not be relied upon for furnishing purposes and are approximate. If floor plans are included, they are for guidance only and illustration purposes only and may not be to scale. If there are any important matters likely to affect your decision to buy, please contact us before viewing the property.